

## Stream Macroinvertebrate General Anatomy Key

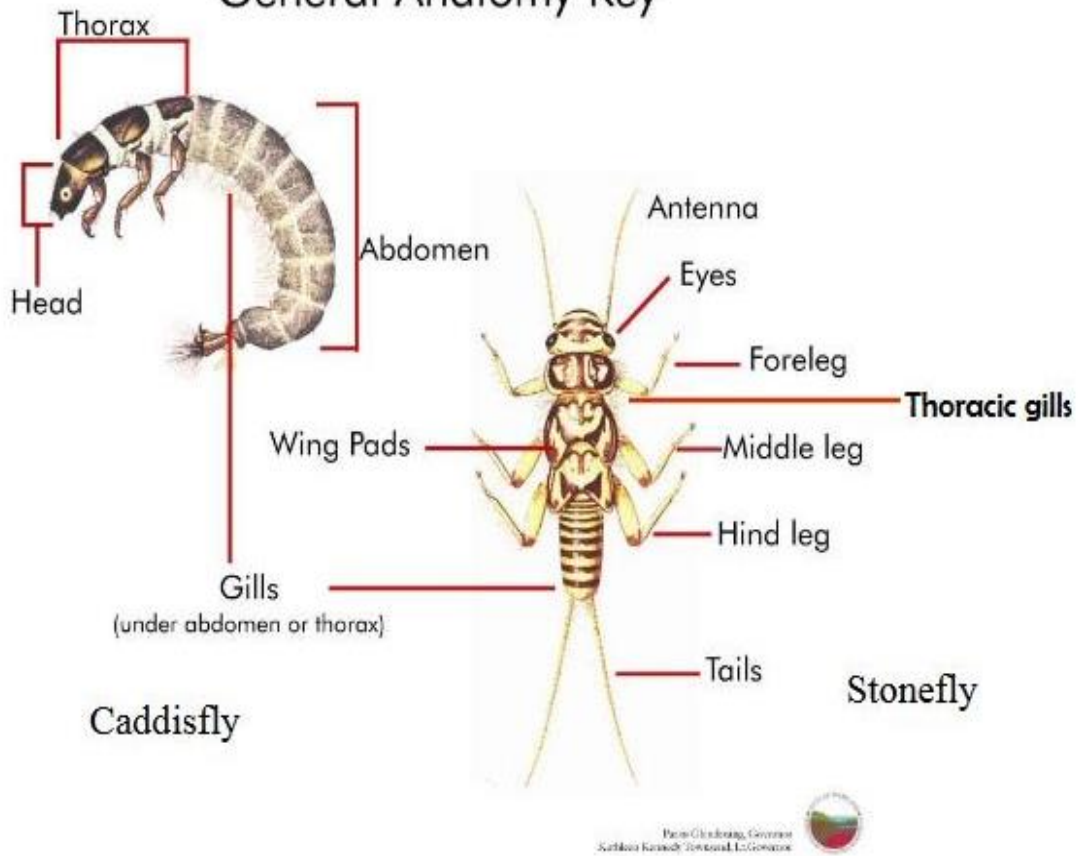
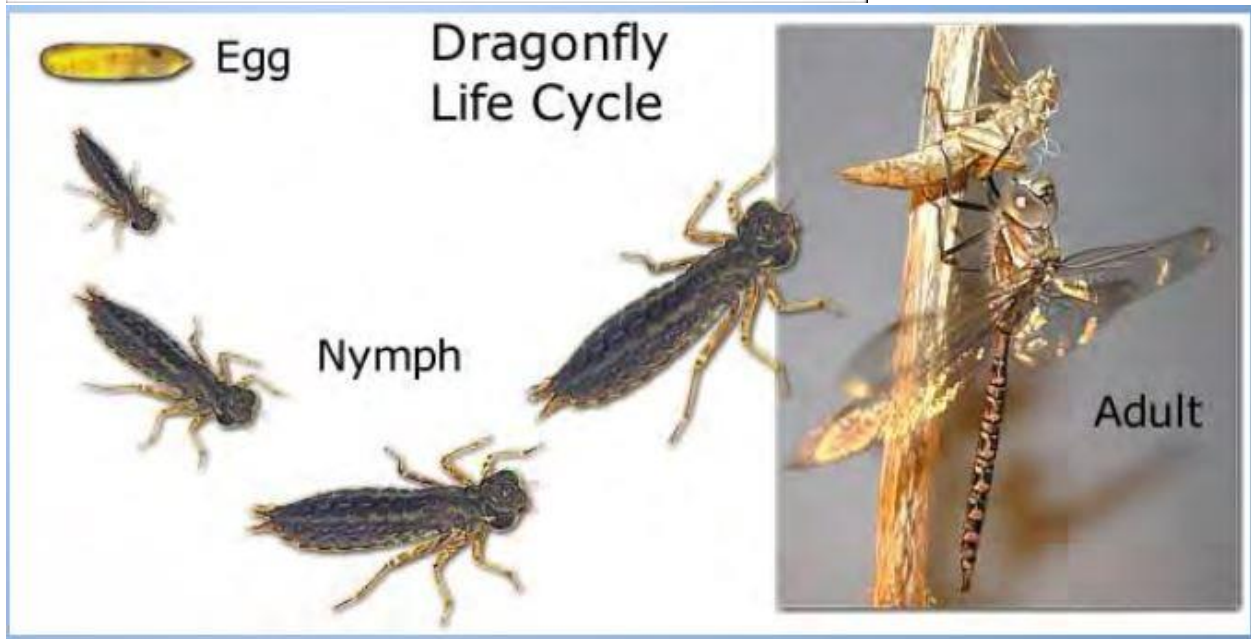
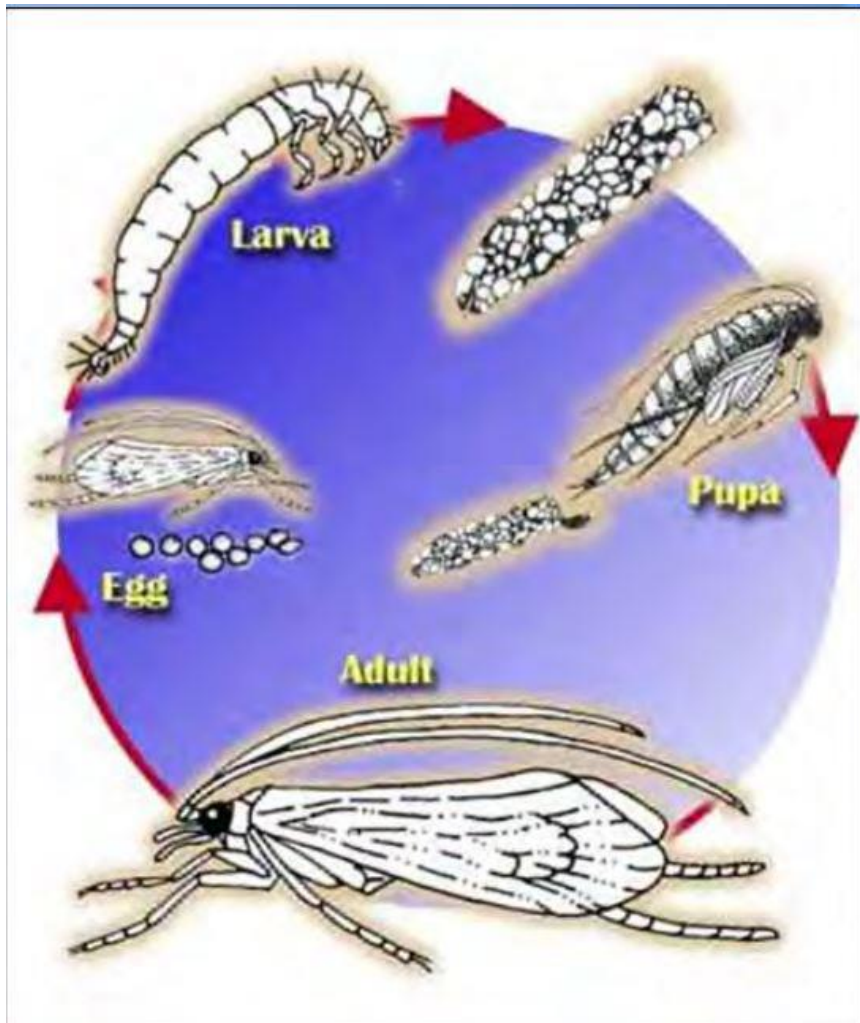


Figure 6. Insect Anatomy



Group 1: Pollution Intolerant Species



Mayfly



Riffle  
Beetle



Caddisfly  
Larva



Stonefly



Right-Handed  
Snail

Group 2: Moderately Pollution Intolerant Species



Sowbug



Scud



Clam



Crayfish



Damselfly  
Larva

Group 3: Pollution Tolerant Species



Aquatic  
Worm



Midge  
Larva



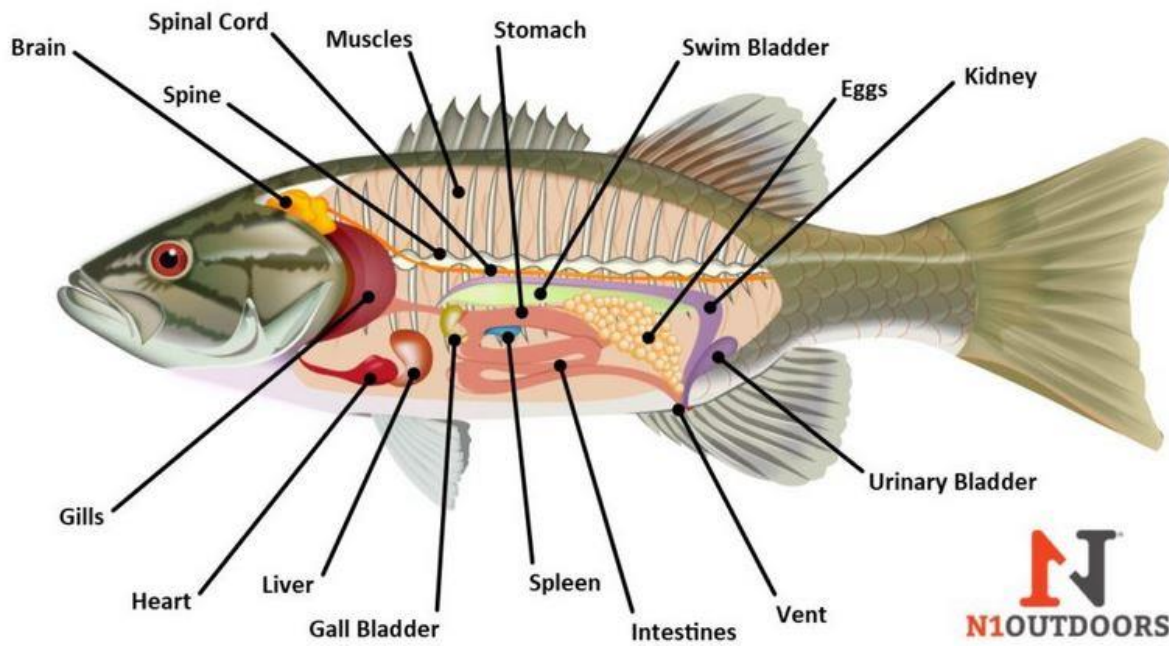
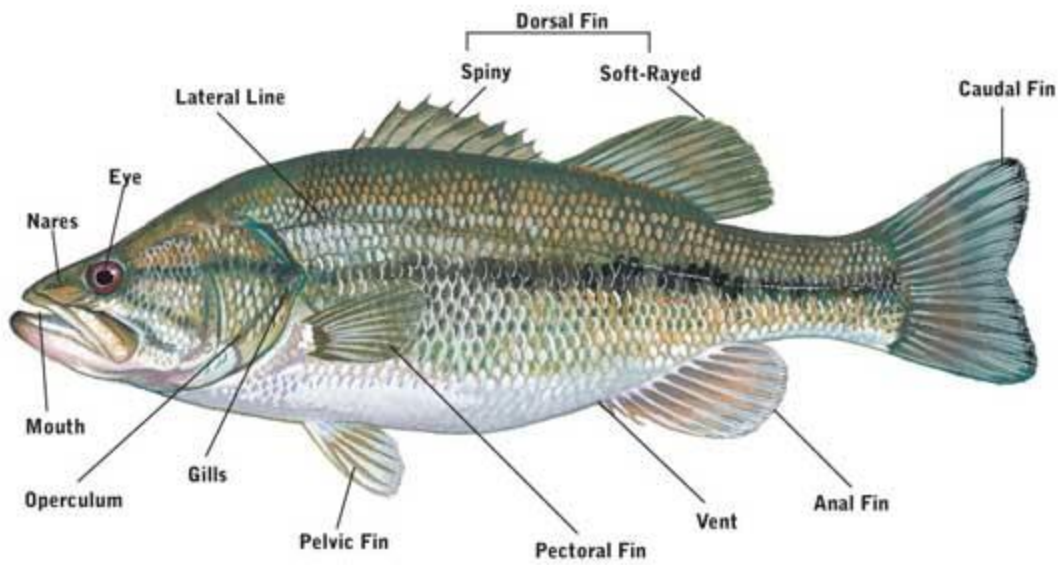
Leech



Black Fly  
Larva



Left-Handed  
Snail



Internal fish anatomy diagram