

# Envirothon Nebraska Policy and Land Use

Kevin Schwartman, P.G.  
Water Planner/Geologist  
Nebraska Department of  
Natural Resources



*Contact information:*

Office Phone: 402-471-3958

Email: [kevin.schwartman@nebraska.gov](mailto:kevin.schwartman@nebraska.gov)



The Policy and Land Use Test questions can be divided into four separate areas:

- Nebraska Government/Legislation
- Current Issues in Nebraska
- Nebraska Geography/Land Use
- Nebraska History



The objectives of the Policy and Land Use Test include:

### Objective 1

- Understand what role the local, state and federal agencies have in implementing and creating Policy in regards to:
  - ✓ Understand and development of conservation practices.
  - ✓ Research.
  - ✓ Collection and storage of natural resources data.
  - ✓ Providing education and technical support.
  - ✓ Developing and enforcing regulations.

# The objectives of the Policy and Land Use Test include:

## Objective 2

- Describe Nebraska geography and land use.
  - ✓ Policies regarding land ownership and water rights.
  - ✓ Crop types and irrigation use.
  - ✓ Agrichemical use and its effects on crop production and the environment.
  - ✓ Environmental problems and opportunities in Nebraska.
  - ✓ Place and names of major rivers, lakes, and geographic regions.
    - Describe the function of specific rivers and lakes.
    - Along with their historical significance.
  - ✓ Know the history of natural resources use in Nebraska.



# The objectives of the Policy and Land Use Test include:

## Objective 3

- Show up-to-date knowledge on the following:
  - ✓ Current land and water use laws and their effects
  - ✓ Historical significance of natural resources law and current bills.
  - ✓ Historical figures who played an important role in development and conservation of Nebraska's natural resources.
  - ✓ Plants and animals protected in Nebraska by the Endangered Species Act.
  - ✓ The function of wetlands and current policies regarding the regulation and protection of wetlands.
  - ✓ Regulatory issues.

Much of this information along with some sample questions can be found under “Resources” on the NRD’s website in the Programs/Education/Envirothon link (<https://www.nrdnet.org/programs/education>, although some links need updating).



# The Policy and Land Use Test:

- Regional test, page 1 of 5.
- State test, page 1 of 10.

## 2017 REGIONAL ENVIROTHON POLICY AND LAND USE TEST

The "Nebraska Geography & Ground Water Geology" map may be used as a reference for any of the questions in this test relating to geography or hydrogeology.

1. The Nemaha Basin in southeast Nebraska is noted for:
  - a. Intensive irrigation development
  - b. Relatively steady level flows
  - c. Downcutting of streams in the basin creating streambank erosion problems
  - d. All of the above
2. Under one scenario regarding global warming, some areas could experience extreme drought conditions. Under these conditions, which region of Nebraska do scientists believe would exhibit the first signs of global warming?
  - a. Sandhills
  - b. Lower Platte River
  - c. Southeast Nebraska loess hills
  - d. Pine Ridge
3. Name the state or states falling entirely within the Missouri River Basin.
  - a. Missouri
  - b. Missouri, Nebraska, South Dakota
  - c. Nebraska
  - d. South Dakota, North Dakota
4. What is not an allowable purpose for an instream flow appropriation in Nebraska?
  - a. fish
  - b. navigation
  - c. recreation
  - d. wildlife
5. The High Plains Aquifer System (which includes the Ogallala Aquifer) covers about 174,000 square miles. Nearly 63,650 square miles or 36.6% of the High Plains Aquifer underlies Nebraska. The High Plains Aquifer underlies part of what other states?
  - a. Kansas, Oklahoma and Texas
  - b. South Dakota and Wyoming
  - c. New Mexico and Colorado
  - d. All of above
6. The Nebraska Environmental Trust Fund is financed by:
  - a. surcharges on hunting and fishing equipment
  - b. habitat stamp purchases
  - c. lottery proceeds
  - d. legislative appropriations





# The Policy and Land Use Tests.

- Both the Regional and the State Tests are multiple choice.
- The regional test is made up of 25 questions.
- The state test is 50 questions.
- State test includes all the questions from the regional test.



Halsey National Forest 4-H Camp,  
State Envirothon Competition, 2008

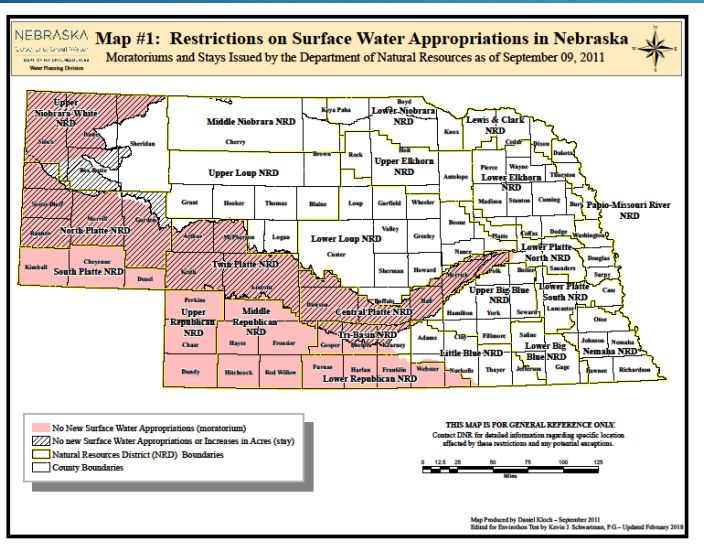


# The Policy and Land Use Test:

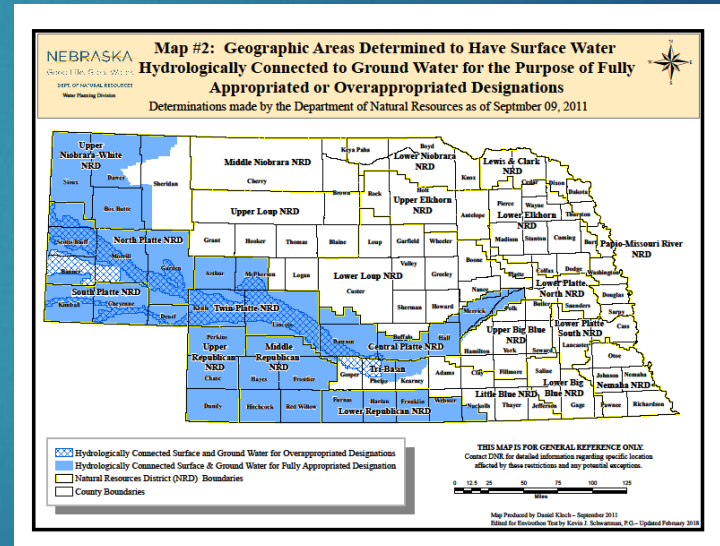
- Last three questions are each associated with a map.
- No prior knowledge is necessary to answer the questions.

Please refer to “Map #1: Restrictions on Surface Water Appropriations in Nebraska” map for the following question. Pay attention to the colors and patterns of each of the restricted areas and how they relate to each of the Natural Resources Districts (NRDs) or counties. A map with this information is located on the Nebraska Department of Natural Resources website, but no prior knowledge of the restricted areas is necessary to answer these questions; this will test your map reading skills. (Hint: Note that parts of the stays and moratoriums do overlap.)

23. According to the map, which of the following NRDs are included in the area with No New Surface Water Appropriations or Increases in Acres (Stay) areas as of September 09, 2011?
- Nemaha, Lower Big Blue, Upper Big Blue, Little Blue, Lewis & Clark, Papio-Missouri River, and part of the Lower Niobrara
  - North Platte, South Platte, Twin Platte, Central Platte, Upper Republican, Middle Republican, Lower Republican, parts of the Upper Niobrara-White, Little Blue Upper Loup and Lower Loup
  - Upper Loup, Lower Loup, Upper Elkhorn, Lower Elkhorn, Lower Platte North and Lower Platte South
  - North Platte, most of the Twin Platte, Central Platte, parts of the Tri-Basin and Upper Niobrara-White.



Map #1: Restrictions of Surface Water Appropriations in Nebraska

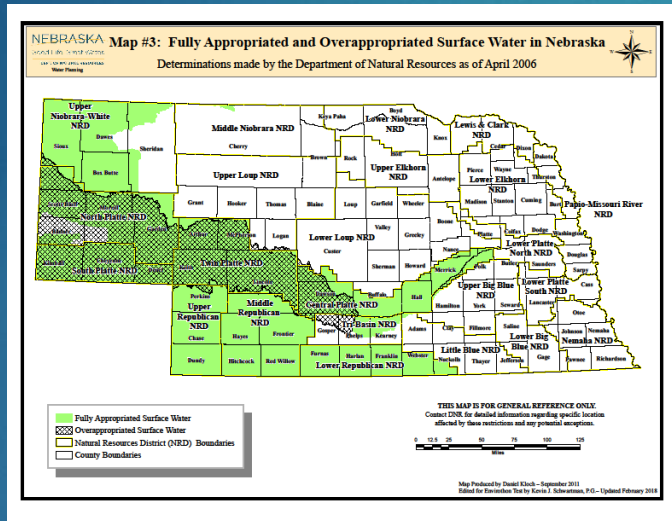


Map #2: Hydrologically Connected Surface and Ground Water for Fully and Overappropriated Designations



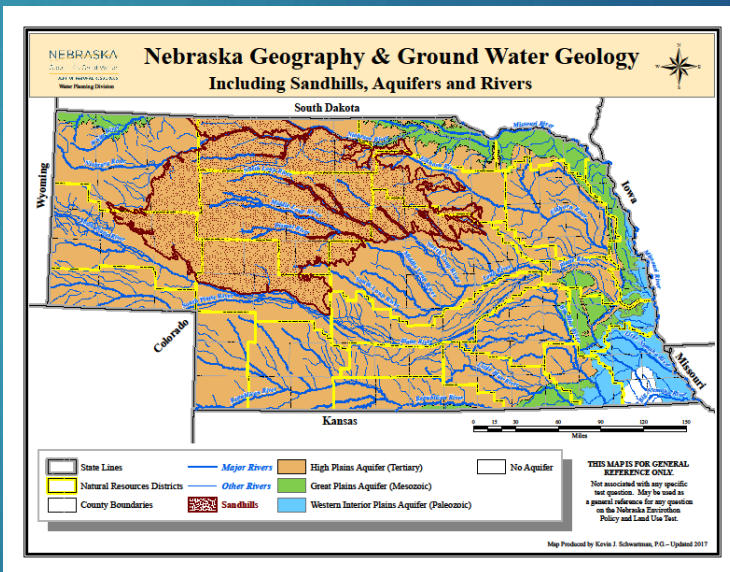
# The Policy and Land Use Test (Last Three Questions)

- The first three maps are designed to test the student's map reading skills and determine how well they follow directions.

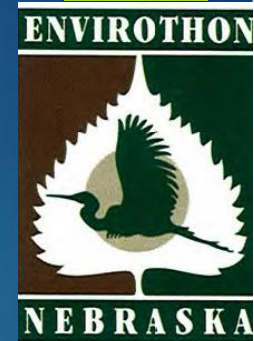


Map #3: Fully and Overappropriated Surface Water in Nebraska

## General Geography & Ground Water Geology Map



- The fourth map does not have any specific questions associated with it, but may be used as an additional resource for geography or other questions.





# The Policy and Land Use Test:

- Questions database.
- Page 1 of 2
- Questions are cycled about every two to three years.
- One question is almost never used two years in a row.
- Outdated and/or inaccurate questions are removed and replaced.
- New questions are added periodically.

**Test Questions Used for Each Year 2012 to 2021**  
**Regional/Nebraska Envirothons**  
**Geography/History Questions**

Question Number	2012	2013	2014	2015	2016	2017	2018	2019	2020	2021
1	/1		/1	/1			/1			
2	2/3		/2		/1					
3		/1		/2		/1				
4	3/5	2/3		2/3	/2		2/			
5				2/3		2/3				
6	4/7	3/5	/4		2/3		3/5			
7										
8	5/9		3/5		/4					
9	6/11			3/			3/			
10		4/7				4/7				
11	7/13		/6		3/5					
12		5/9			4/6					
13	8/15			4/		/2				
14	9/17		4/7		/7		4/			
15		/10				/4				
16		6/11				5/8				
17	10/19		5/8		/8					
18		7/13			5/9		5/			
19	11/21			5/		/19				
20	12/23		6/9		/10					
21		/12				6/10				
22	13/25		/10	6/		/11				
23		8/15			6/11		6/			
24	/2		7/11		/12					
25		/14				7/12				
26	/4		/12	7/			7/			
27	/6			8/		/13				
28		9/17				/6				
29	/8		8/13		7/13					
30		/16		9/		8/14				
31	/10		/14		8/14					
32		/18					8/			
33		10/19		10/		/15				
34	/12		9/15		9/15					
35	/14		/16			9/16				
36		/20			10/16		9/			
37	/16			11/		/17				
38	/18		10/17			10/18				
39	/20					11/17				
40		11/21				/18		10/		
41			11/18			/19				
42		/2			/19					
43		/4				11/20				
44		/6					11/			
45		12/23			12/20					
46			12/19			/21				
47		/22			13/21					
48		/8		12/		/22				
49		/24				/22				
50			13/20			12/23				
51	/24		/21				12/			
52			/22		/23					
53			/23		/24					
54		13/25		13/		13/24				
55			/24		/25		13/			
56	/22		/25			/25				
57										
58										
59										
60										



# Useful Study Exercises

(Updated from the Policy Study Guide-NRD Website):



## Exercise 1

- Contact a representative from your local Natural Resources Districts:
  - ✓ Discuss policies and their effects on natural resources management and usage.
  - ✓ Discuss local environmental problems and the policies used to control and correct these problems.
  - ✓ Discuss how the role of the local, state, and federal government differs in regard to natural resources.

## Exercise 2

- Check out the “Statutes, Rules & Regulatory History” link on the Nebraska Department of Natural Resources website:  
(<https://dnr.nebraska.gov/surface-water/statutes-rules-regulatory-history>), which is located under “Surface Water” on the main page.
  - ✓ Note the rights and responsibilities of water users.

# Useful Study Exercises

(Updated from the Policy Study Guide-NRD Site):

## Exercise 3

- Read and clip out newspaper and magazine articles on land use and policy issues.
  - ✓ Keep a scrapbook to use as a study resource.
    - Useful articles can often be found in the Omaha World Herald.
    - Lincoln Journal-Star and other local newspapers.
    - Magazines such as Nebraska Farmer and Nebraskaland.
- Many government agencies and some private organizations publish newsletters that describe their programs and current projects, policy, and land use issues; along with natural resource legislation.
  - ✓ Become familiar with the basic roles of various government agencies. Many agencies have websites that are an excellent source of information about what role they have and what services they provide.
  - ✓ Most agencies also have brochures or publications that describe their functions.





## Exercises (Updated from the Policy Study Guide):

Federal Agencies involved in natural resources work include:

- Bureau of Land Management (BLM) <http://www.blm.gov>
  - ✓ BLM Facts page <http://www.blm.gov/nhp/facts/index.htm>
- Bureau of Reclamation (BOR) <http://www.usbr.gov>
  - ✓ BOR Projects & Facilities page, click Nebraska on the map to see information on projects <https://www.usbr.gov/projects/facilities.php?state=Nebraska>
- Environmental Protection Agency (EPA) <http://www.epa.gov>
- Nebraska Natural Resources Conservation Service (NRCS) <http://www.ne.nrcs.usda.gov>
- United States Army Corps of Engineers (COE) <http://www.usace.army.mil>
- United States Geological Survey (USGS) <http://www.usgs.gov>

Most of these links also have information on current and historical Activity in Nebraska.



## Exercises (Updated from the Policy Study Guide):

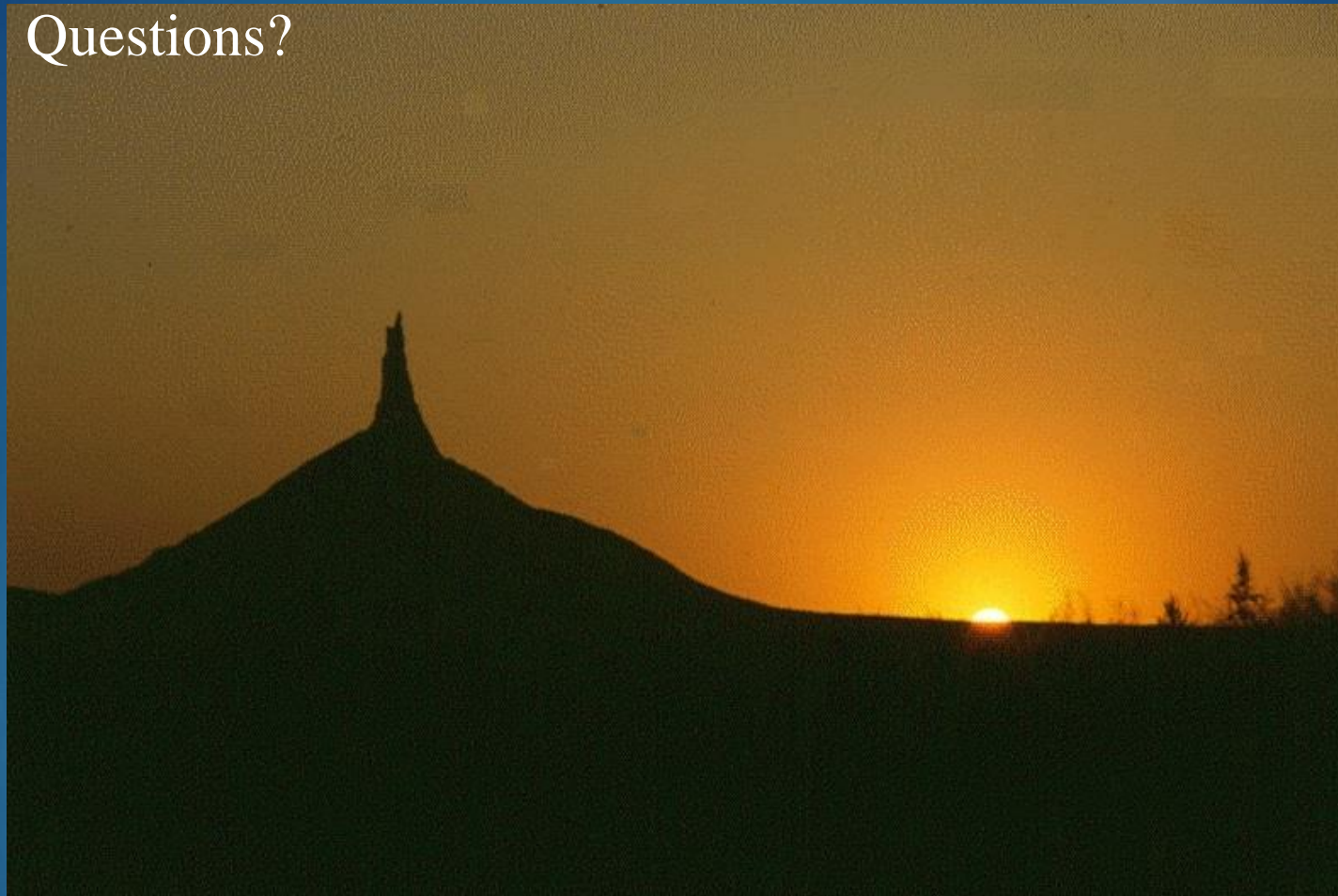
State of Nebraska Agencies involved in natural resources work include:

- Nebraska Department of Agriculture <http://www.agr.state.ne.us>
- Nebraska Department of Environmental Quality (NDEQ) <http://www.deq.state.ne.us>
- Health and Human Services System (HHS)/Public Health tab [http://dhhs.ne.gov/publichealth/Pages/public\\_health\\_index.aspx](http://dhhs.ne.gov/publichealth/Pages/public_health_index.aspx)
- Nebraska Department of Natural Resources (NeDNR) <https://dnr.nebraska.gov>
- Nebraska Natural Resources Commission/Water Task Force <https://nrc.nebraska.gov/water-sustainability-fund-0>
- University of Nebraska:
  - ✓ Conservation & Survey Division (CSD) <http://snr.unl.edu/csd>
  - ✓ Nebraska Water Center <https://watercenter.unl.edu>
- National Association of Resource Districts <http://www.nrdnet.org>

Also check out the web pages of each of the Natural Resource Districts.



Questions?



ENVIROTHON



NEBRASKA

Chimney Rock,  
Summer of 1987

*Contact information:*

Office Phone: 402-471-3958

Email: [kevin.schwartman@nebraska.gov](mailto:kevin.schwartman@nebraska.gov)